

SHERINGHAM MUSEUM

at the MO



EXPLORE

& conserving
& preserving

Funding raised by
The National Lottery
and awarded by the Heritage Lottery Fund



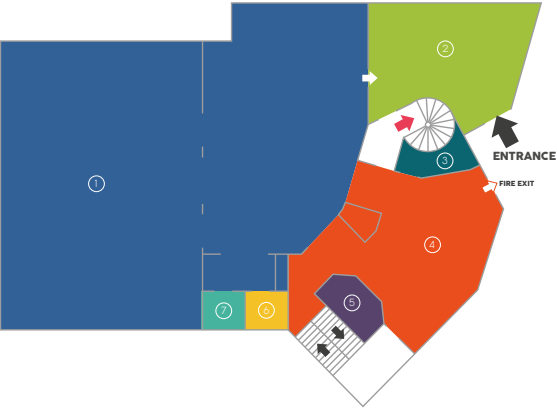
SHARE Museums East
a network of know how



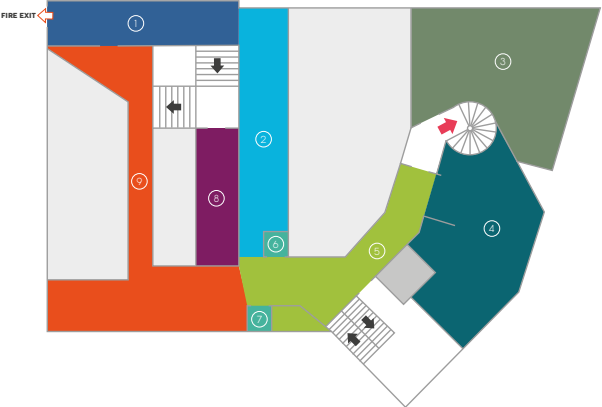
Step inside stunning galleries where you can walk amongst an extraordinary historic fleet of lifeboats and fishing boats. Here you will find the story of the town and its proud, brave and independent people. Packed with fascinating stories and interesting details.



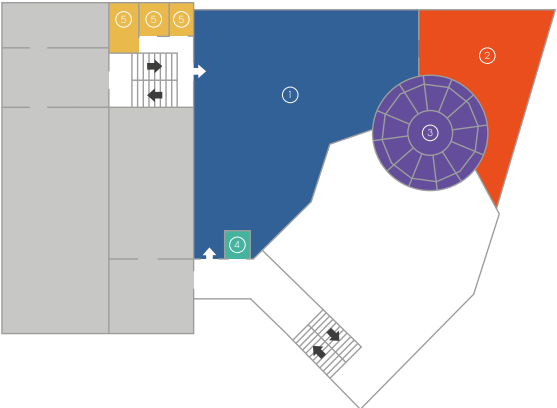
GROUND FLOOR



FIRST FLOOR




SECOND FLOOR



- ① The Boat Gallery
- ② Gift Shop
- ③ Fisherman's Cottage
- ④ Fishermens' & Boat Building Gallery
- ⑤ The Emery Workshop
- ⑥ WC  & Baby Changing
- ⑦ Lift
- ➡ Staircase to the Tower



- ① Geology Gallery
- ② Viewing Balcony
- ③ Sheringham Shoal Windfarm Visitor Centre
- ④ The Social History Gallery
- ⑤ Shannock Street
- ⑥ Lift to Second Floor
- ⑦ Lift to Ground Floor
- ⑧ Information Room (Up one flight of stairs)
- ⑨ Veranda and Walkway
- ➡ Staircase to the Tower

- ① Upper Deck
- ② The Terrace
- ③ The Tower
(Access only from the ground and first floor)
- ④ Lift to First Floor
- ⑤ WCs 

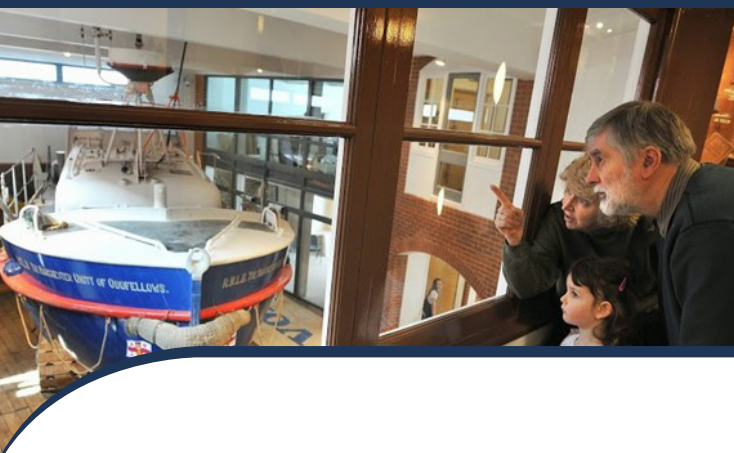
Our building is sited on the seafront promenade in Sheringham. It is larger than you might expect, so it's easy to spend an hour and a half (or more) exploring our collection.

enquiries@sheringhammuseum.co.uk



WHY THE **MO**?

The museum sits on the footprint of a house long gone; that house was named **Mo** after a girl called Morag. It is still affectionately known as that by Sheringham locals to this day.



- ➔ Free entry to the Shop, Windfarm room and viewing tower
- ➔ Unique collections including the chronology of the history of lifeboats
- ➔ Research archive
- ➔ Geology display
- ➔ Year round events
- ➔ 'Shannock street' row of shops
- ➔ Group and schools bookings welcome
- ➔ Corporate and events hire

The Museum is located in Sheringham's east end promenade with ample parking nearby. Buses, Coast Hopper Service, trains, Bittern Line and North Norfolk Railway also serve the town regularly. On the Norfolk Coast Cycle way, Norfolk Coast Path and Peddars Way.



CONTACT US:

Sheringham Museum, Lifeboat Plain
Sheringham. NR26 8BG

www.sheringhammuseum.co.uk

There is level access to all galleries and the Windfarm Visitor Centre via a lift and ramps but a spiral staircase to the panoramic tower.

We don't have a cafe, so our tickets are all-day tickets - you can drop in and out to one of the many great cafes in the town whenever you wish.

ADMISSION PRICES

We are an independent, not for profit, charitable trust who operate the museum with volunteers. We receive no regular funding from government. We have to charge a modest fee to enable us to stay open and maintain our exhibits. Please call or email or check the website for the latest prices which start at as little as **£2 per child** and **£4 per adult**. Concessionary, family, school and group discounts available.